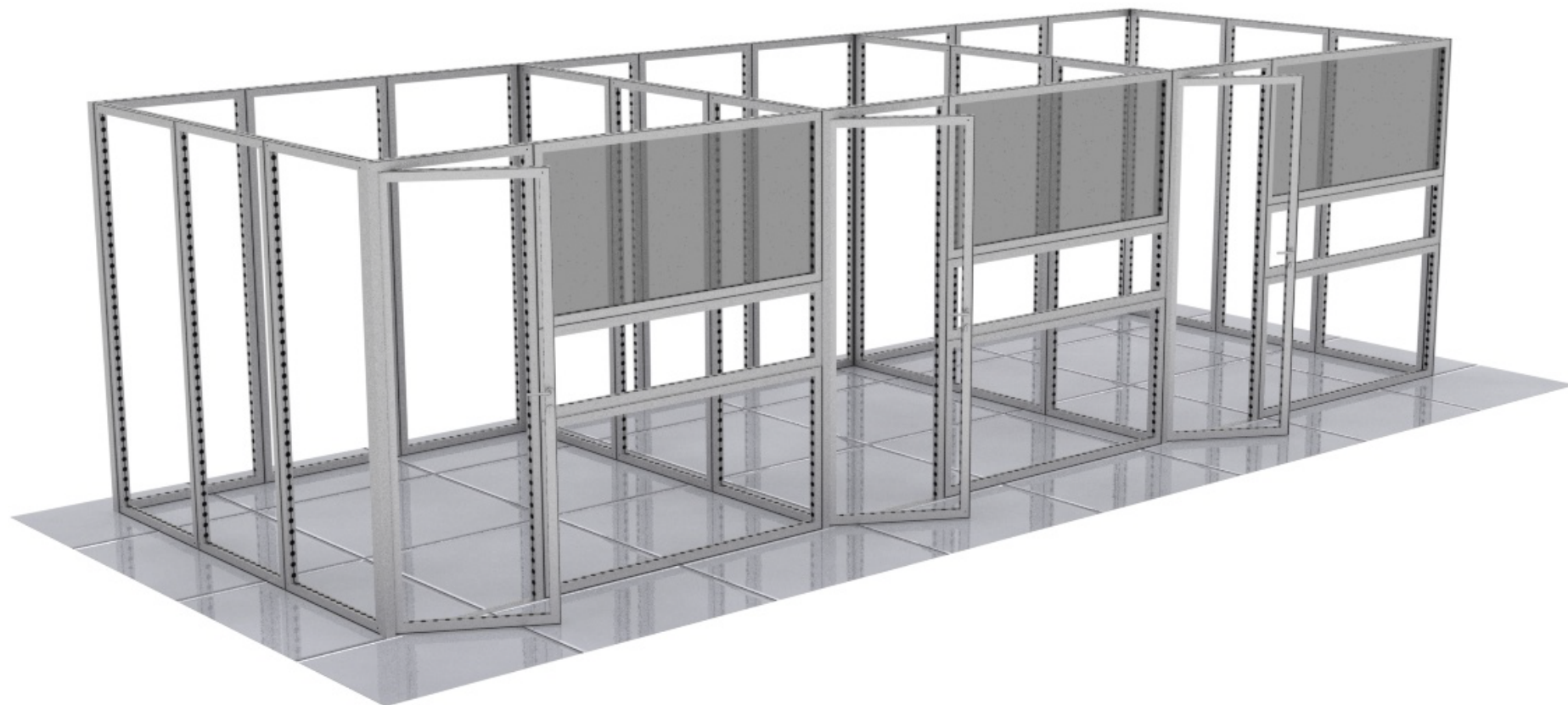
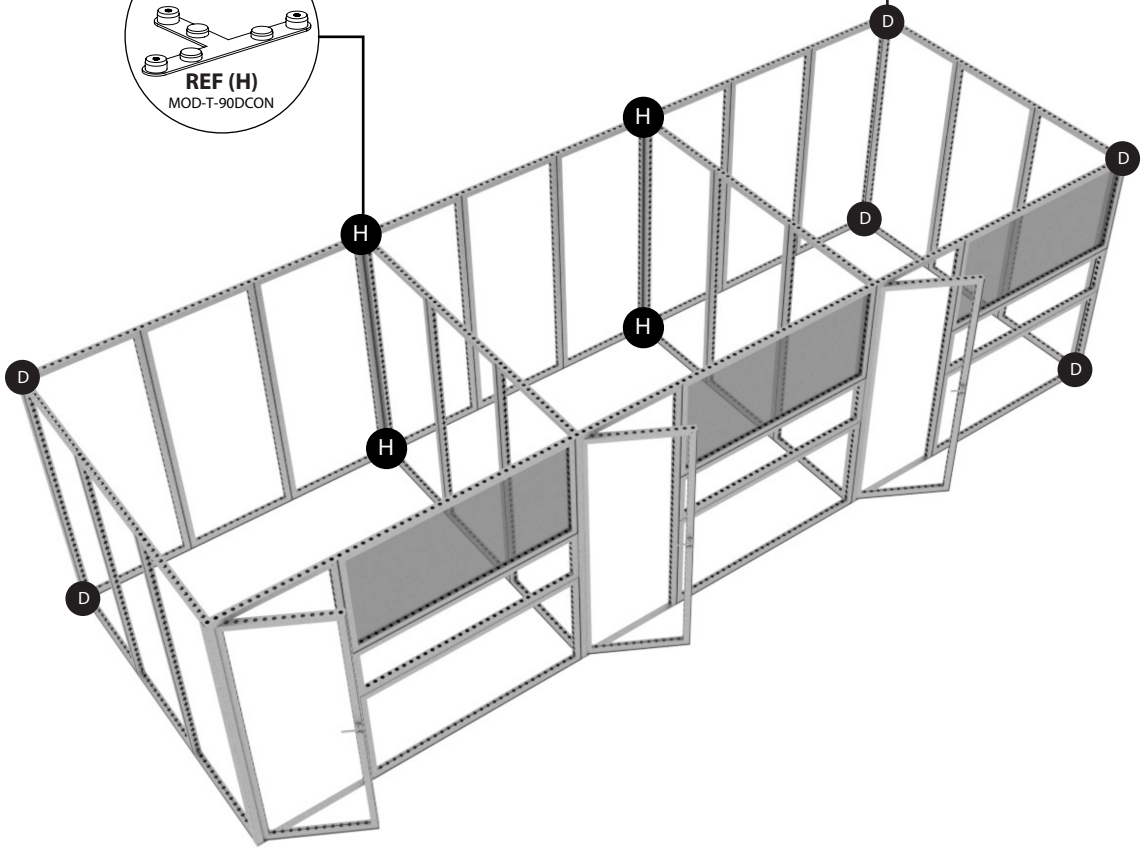
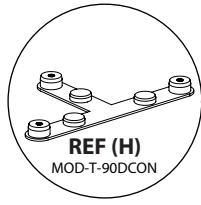
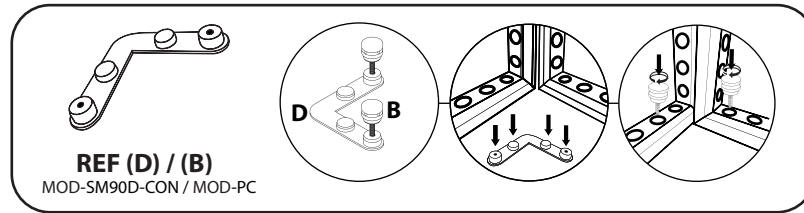


SEG'SHOW 18 - 30x10

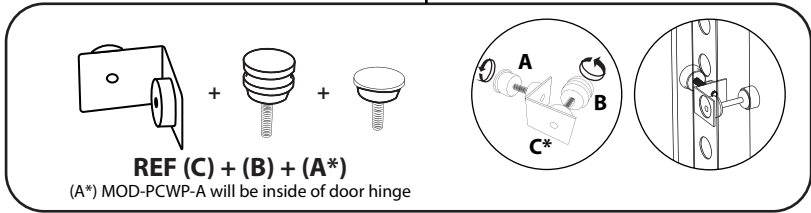
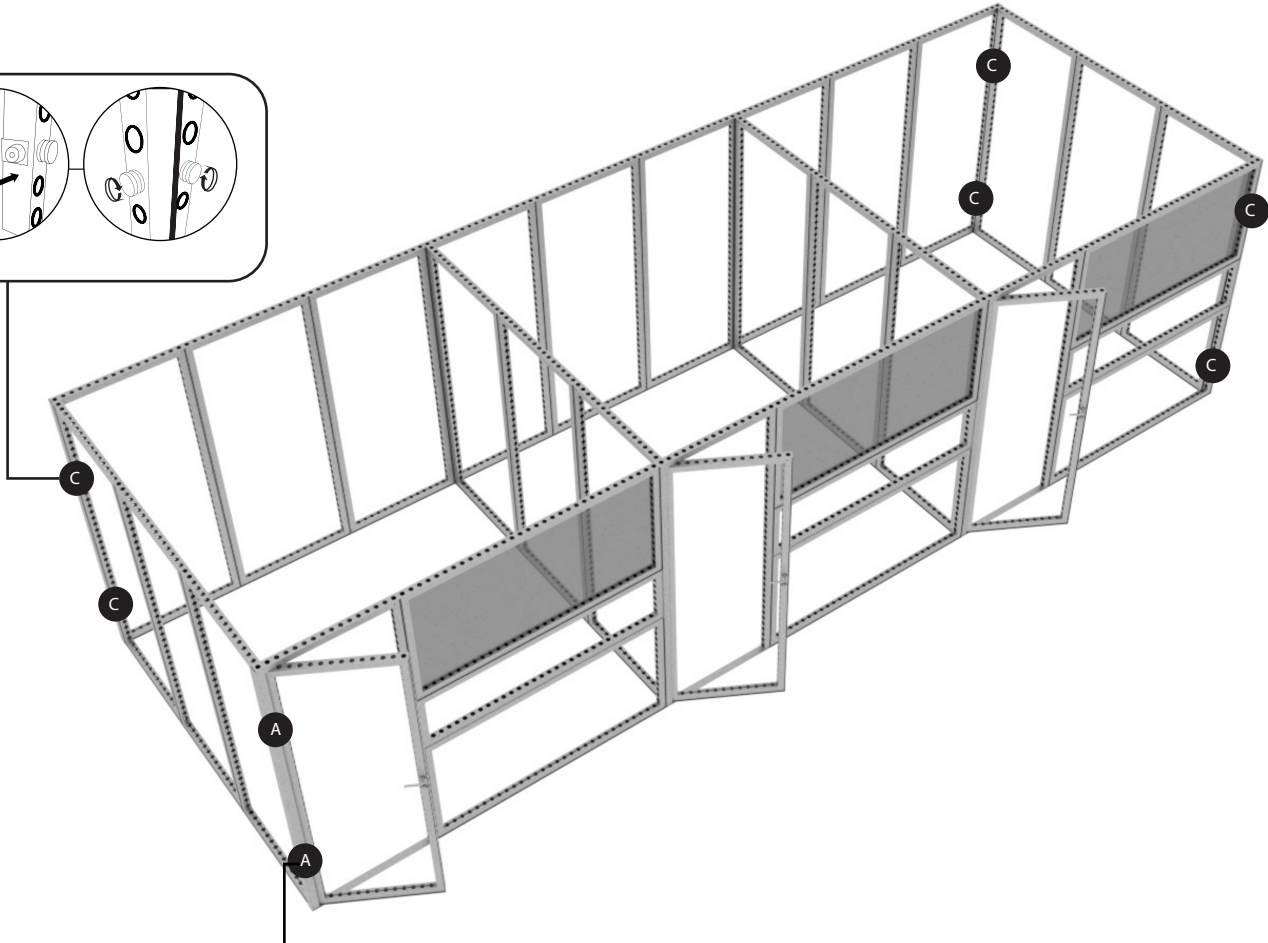
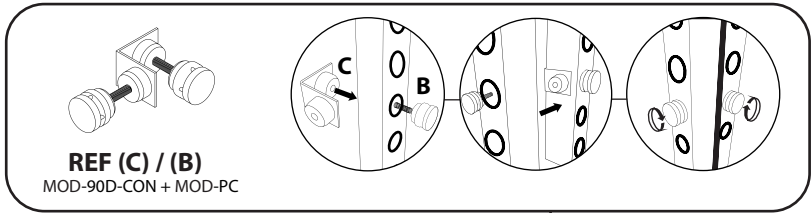


SEG'SHOW 18 - 30x10

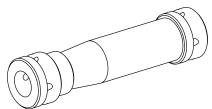


PARTS LIST			
REF	QTY	PART NO.	DESCRIPTION
1	21	MOD-FRM-992x2418	Straight Frame, Corner Screw Connect 992mm x 2418mm
2	3	MOD-DSWL-992x2418	Door Set w/ Lock 992mm x 2418mm
3	6	MOD-FRM-992x1984	Straight Frame, Corner Screw Connect 992mm x 1984mm
7	3	MOD-FRM-310x1984	Straight Frame, Corner Screw Connect 310mm x 1984mm
B	115	MOD-PC	Pin Connector
C	16	MOD-90D-CON	90° Connector
D	7	MOD-SM90D-CON	90° Connector
E	44	MOD-CLA-CON	Clamp Connector
AJ	31	MOD-180D-CON	180 Degree Connector
A	12	MOD-PCWP-A	Pin Connector for Door Jamb
H	6	MOD-T-90DCON	T Shape 3 Way 90 Degree Connector Used per Set of 2pcs
AA	10	MOD-DCC-180D	Door Clamp Connector, 180 Degrees (Connect to Wall Frame)
--	3	3/8 P95 ACRYLIC	ACRC P95 0000 .375x48x96 PS ACRYLIC CAST MATTE CLEAR
AO	12	MOD-PNL-CON-B	Seg'Show Panel fixing connector B

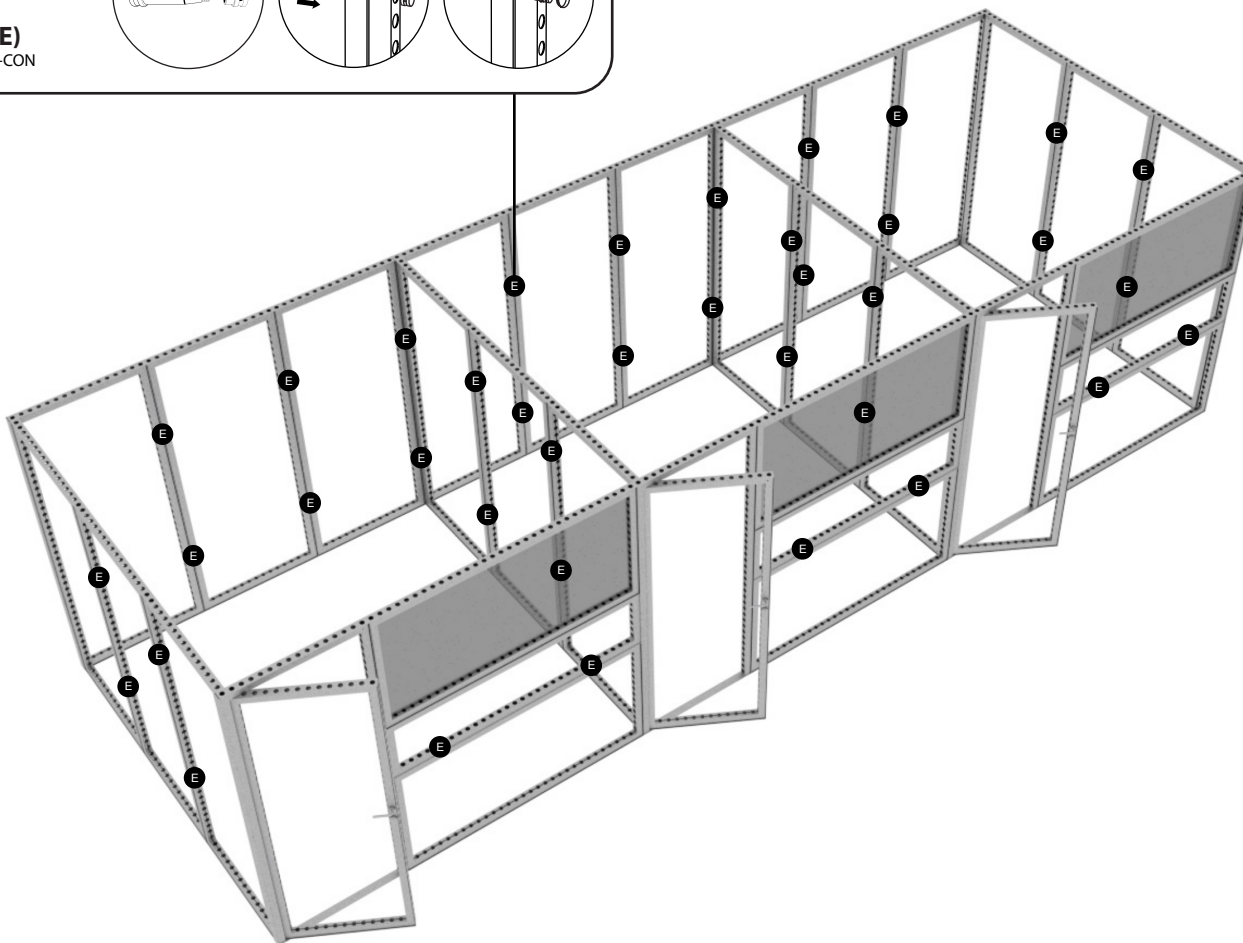
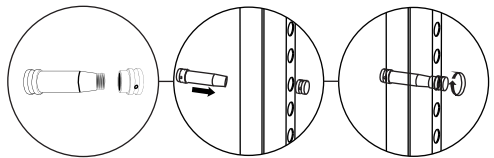
SEG'SHOW 18 - 30x10



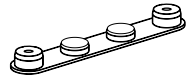
SEG'SHOW 18 - 30x10



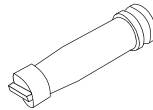
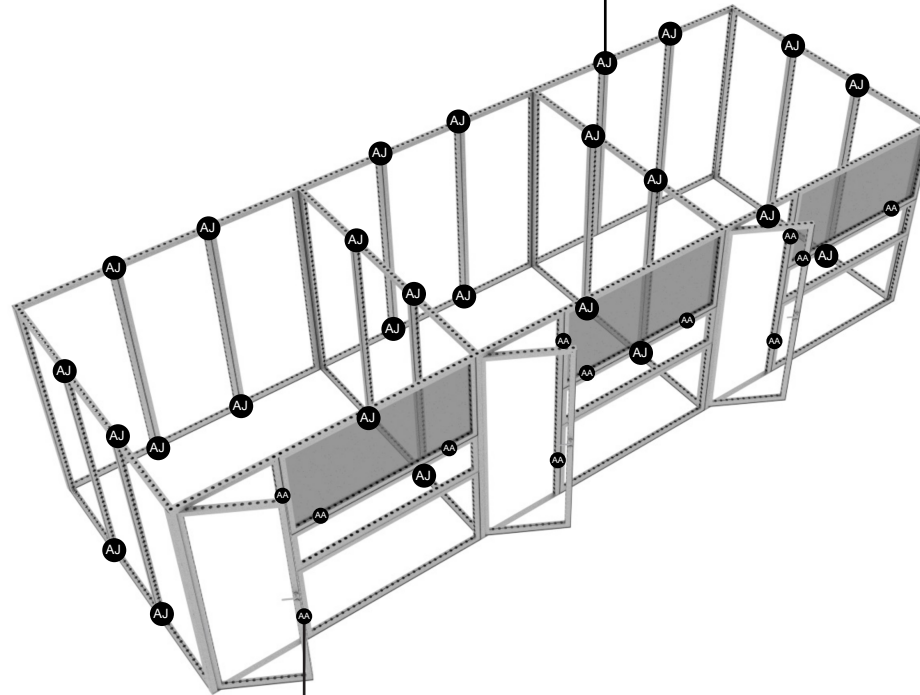
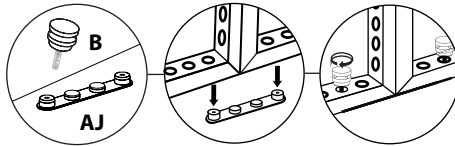
REF (E)
MOD-CLA-CON



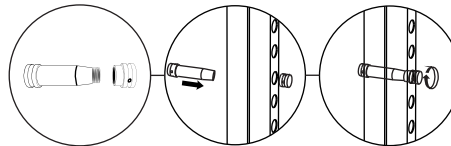
SEG'SHOW 18 - 30x10



REF (AJ) / (B)
MOD-180D-CON / MOD-PC

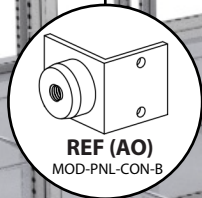
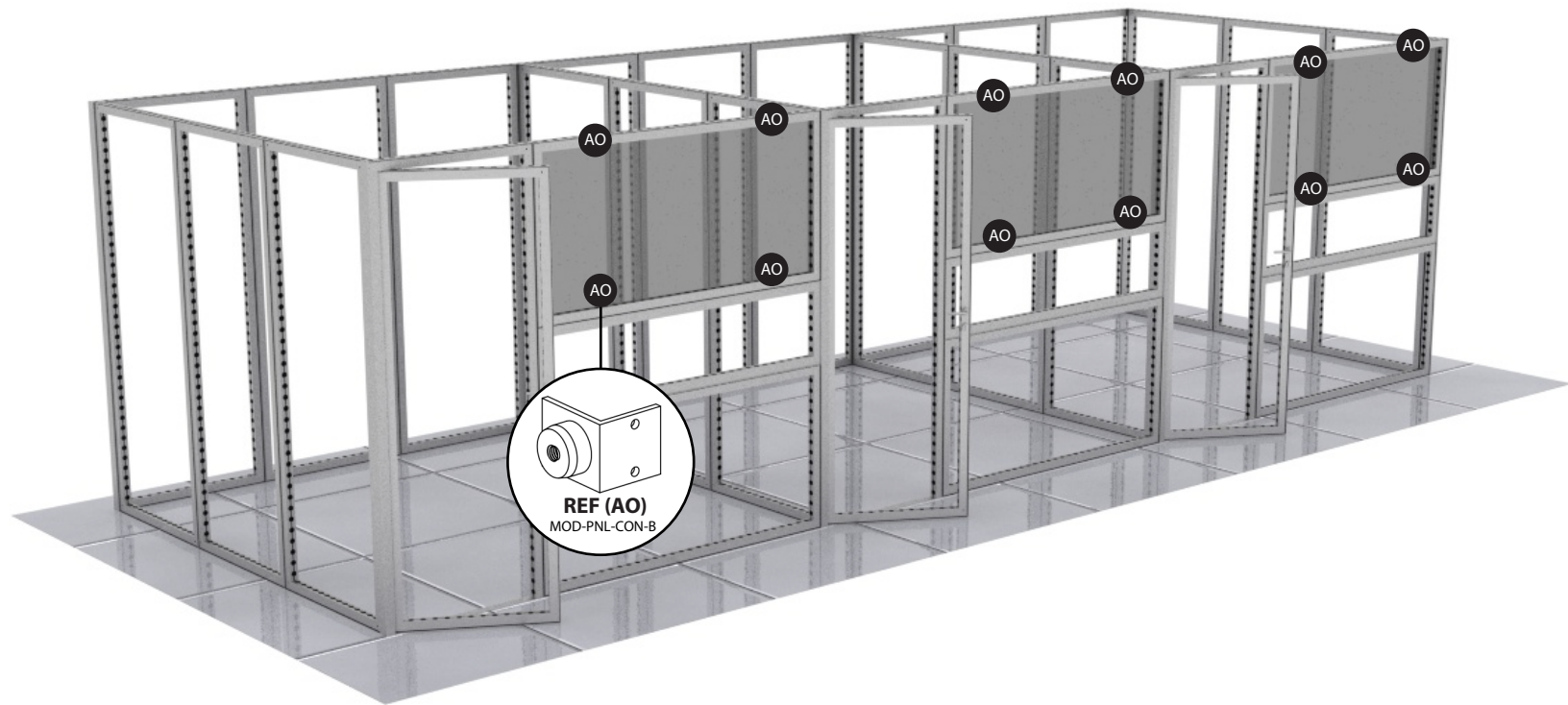


REF (AA)
MOD-DCC-180D

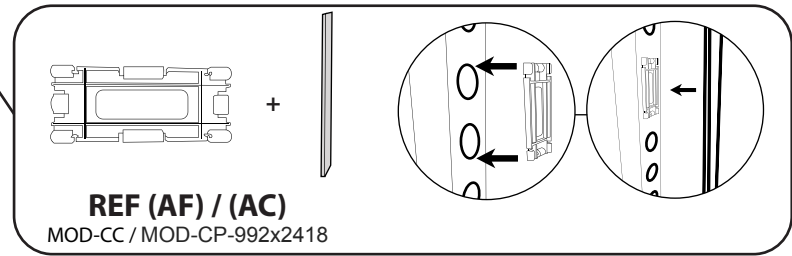
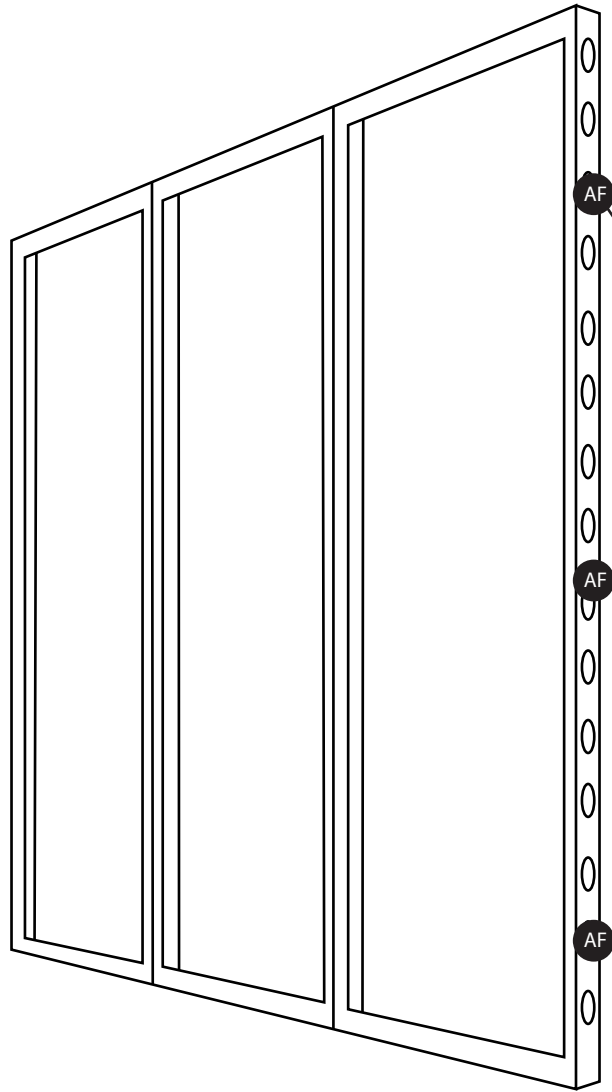


Cap should remain on the inside of the door jamb.

SEG'SHOW 18 - 30x10



SEG'SHOW 18 - 30x10



COVER PROFILES & ACCESSORIES

REF	QTY	PART NO.	DESCRIPTION
AC	4	MOD-CP-992x2418	Cover Profile for Frame 992x2418. Flat Model. Anodized
AF	12	MOD-CC	Clip Connector Cover Connects Cover Profile
AL	132	MOD-FP	Seg'Show Frame Protector

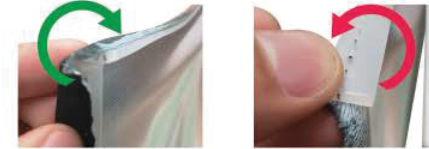
GRAPHIC INSTALL



Place graphic over the front of the frame.



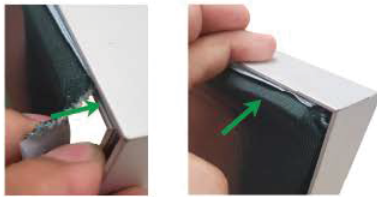
Begin inserting SEG beading at each corner.



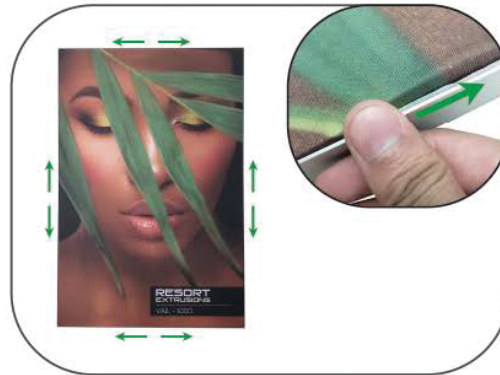
YES

NO

Insert the silicone beading with the fabric folded over. The silicone beading should not be exposed.



Using your fingers, push both fabric and silicone beading completely into the extrusions channel.



Continue to push in the remaining silicone beading on each side.



Check the perimeter of the frame for any excess beading that hasn't been pushed in. Graphic should be taut.